

4

3

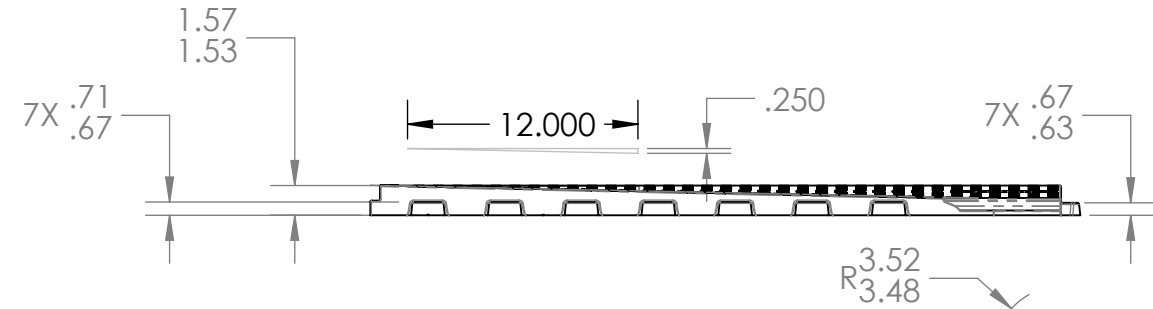
2

1

NOTES:

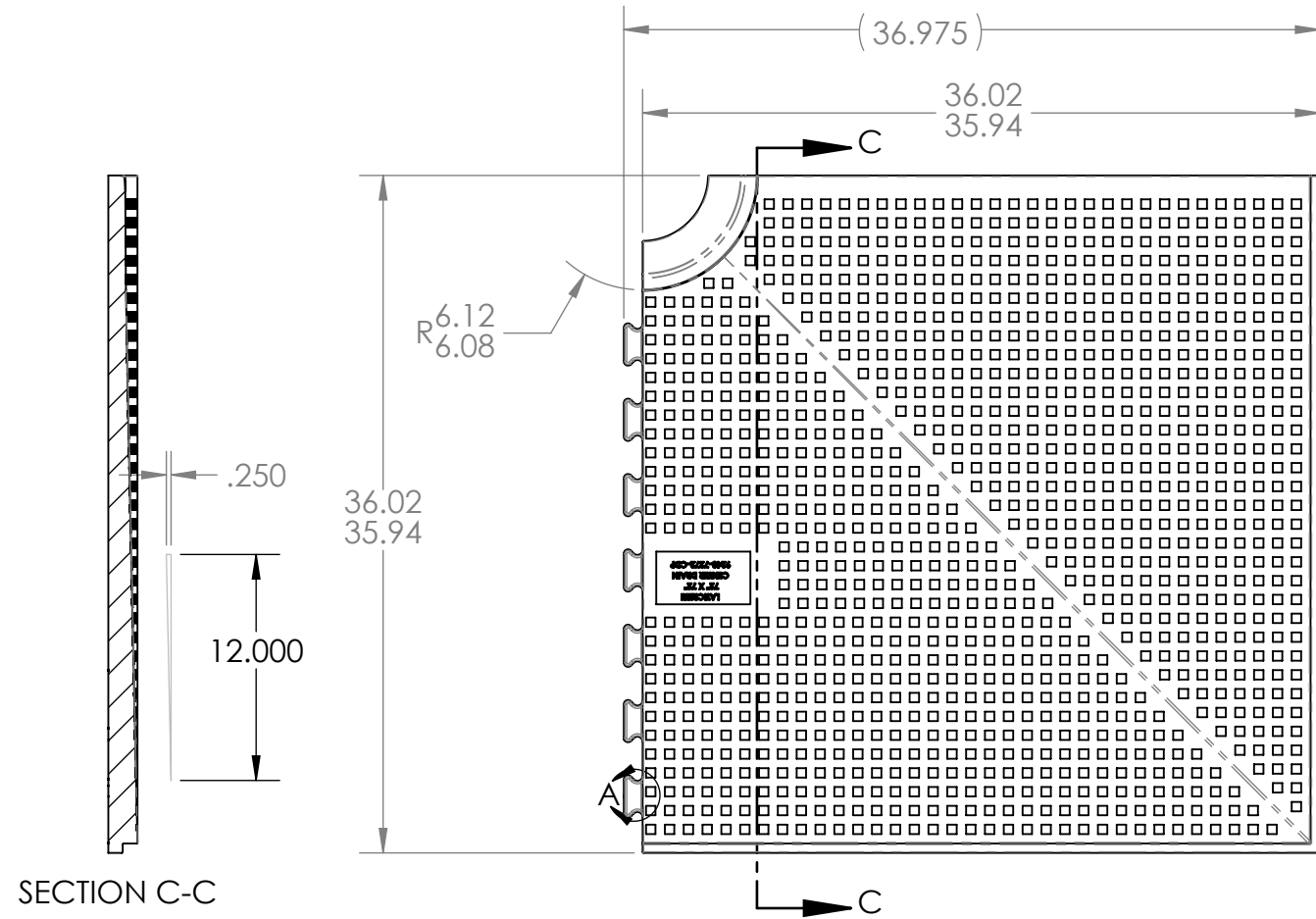
- 1. DENSITY TO BE A MIN OF 3.0 LBS/FT³.
- 2. MATERIAL TO BE A MIN 50 PSI COMPRESSIVE STRENGTH.
- 3. NO BURRS OR LOOSE MATERIAL LARGER THAN .10".
- 4. DRAWING IS FOR INSPECTION PURPOSES ONLY. ALL UNDIMENSIONED FEATURES TO BE HELD +/- .020" WITH RESPECT TO 3D CAD MODEL.

REVISIONS				
ZONE	REV.	DESCRIPTION	DATE	APPROVED
-	C	INCREASED MINIMUM PITCH TO .25"/FT, ADDED PITCH TRIANGLES, ADDED SEC C-C	7/11/19	

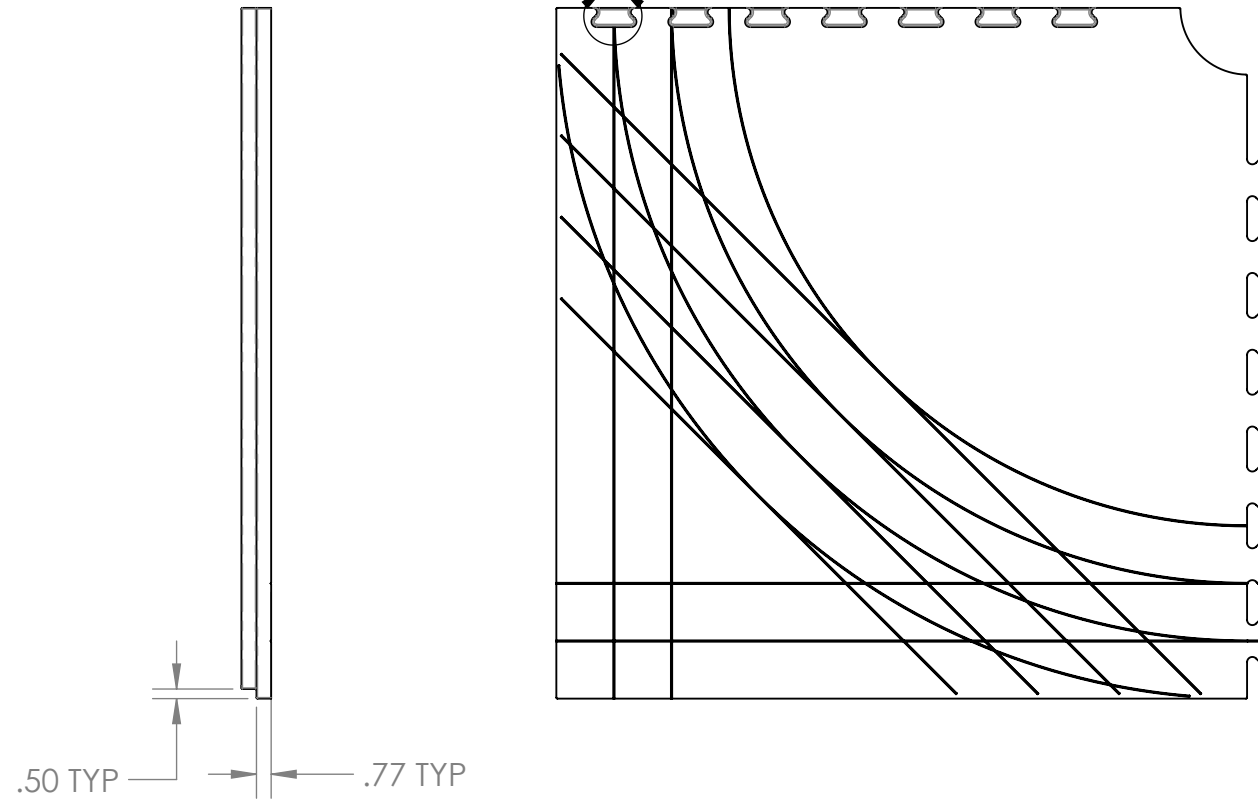


B

B

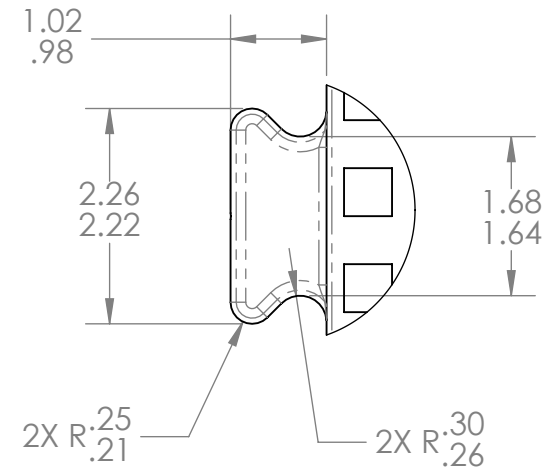


SECTION C-C

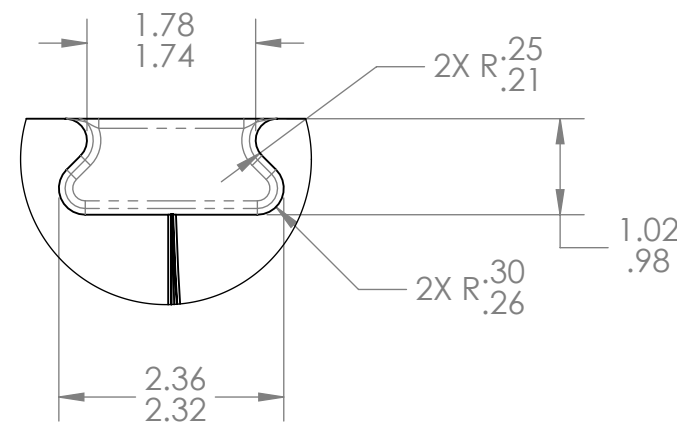


A

A



7X DETAIL A SCALE 1 : 2



7X DETAIL B SCALE 1 : 2

PROPRIETARY AND CONFIDENTIAL

THE INFORMATION CONTAINED IN THIS DRAWING IS THE SOLE PROPERTY OF LATICRETE INTERNATIONAL, INC. ANY REPRODUCTION IN PART OR AS A WHOLE WITHOUT THE WRITTEN PERMISSION OF LATICRETE INTERNATIONAL IS PROHIBITED.

LATICRETE INTERNATIONAL INC.
91 AMITY ROAD
BETHANY CT 06524

UNLESS OTHERWISE SPECIFIED:	NAME	DATE
DIMENSIONS ARE IN INCHES TOLERANCES: ANGULAR: MACH ± 2 BEND ± 5 TWO PLACE DECIMAL ± .010 THREE PLACE DECIMAL ± .005	DRAWN BY BAYER	5/23/18
INTERPRET GEOMETRIC TOLERANCING PER: ASME Y14.5 - 2009	CHECKED BY	
MATERIAL SEE NOTES	APPROVED BY	
FINISH N/A	COMMENTS:	
DO NOT SCALE DRAWING		

LATICRETE		
TITLE: 72"X72" CENTER DRAIN PAN QUARTER		
SIZE B	DWG. NO. 9243-7272-CDP	REV C
SCALE: 1:10 WEIGHT:		SHEET 1 OF 1

4

3

2

1