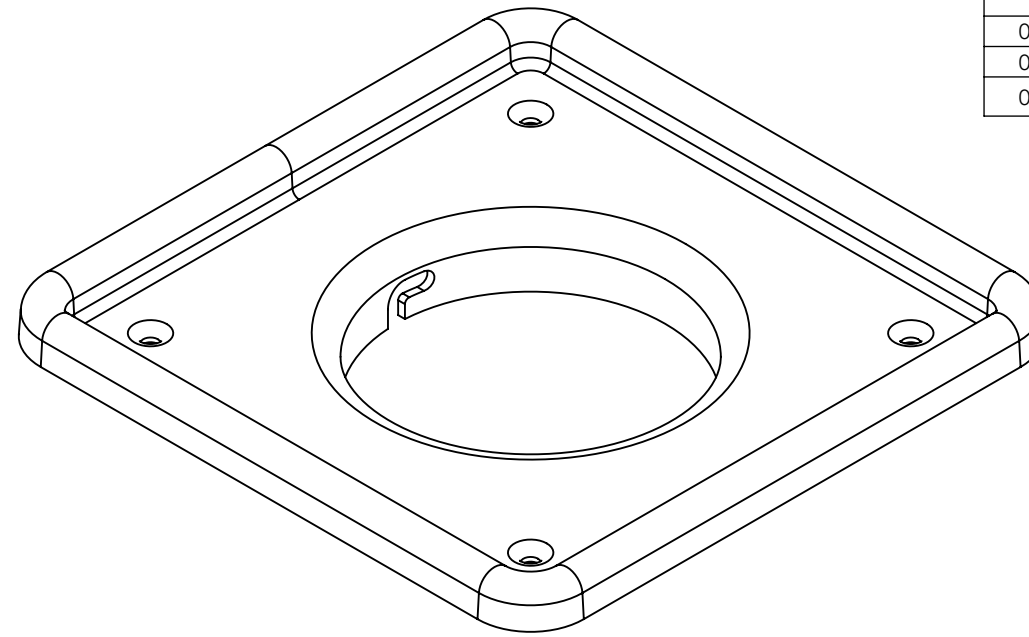
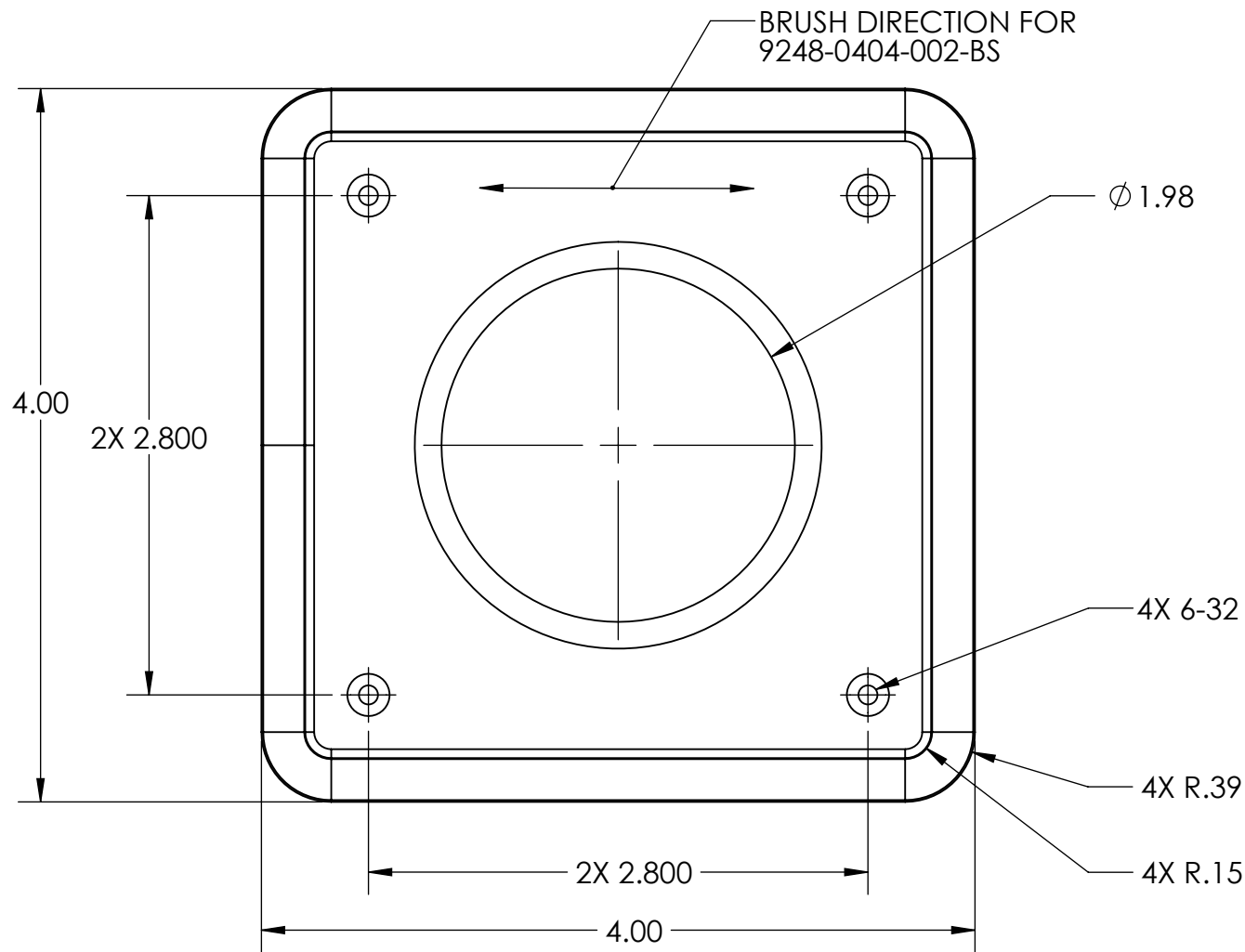
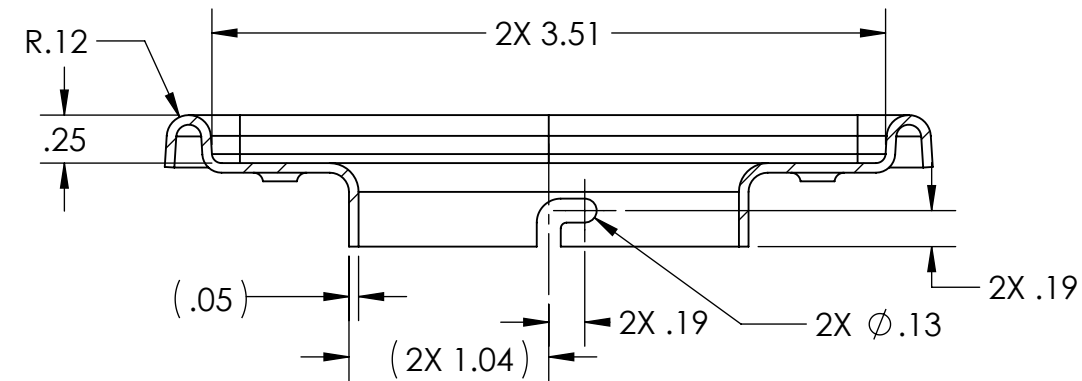
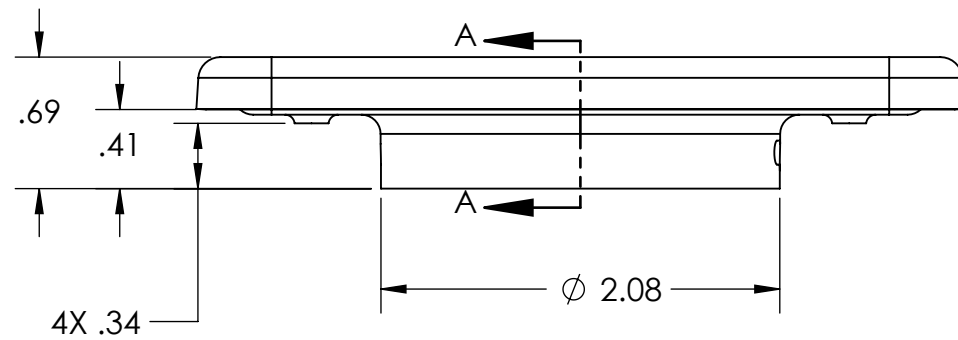


REVISION	NOTES	CHANGED BY	CHECKED BY	RELEASED DATE
01	RELEASED TO PRODUCTION	TC	JC	5/4/18
02	MATERIAL WAS 316L	BAYER		6/19/18
03	THICKNESS WAS .04. ADDED BRUSH DIRECTION	BAYER		7/20/18



PART NUMBER	DESCRIPTION	FINISH
9248-0404-002-BS	4" X 4" STAMPED METAL BASEPLATE	BRUSHED STAINLESS STEEL
9248-0404-002-PS	4" X 4" STAMPED METAL BASEPLATE	POLISHED STAINLESS STEEL
9248-0404-002-ORB	4" X 4" STAMPED METAL BASEPLATE	OIL RUBBED BRONZE



SECTION A-A

NOTES:

- MATERIAL CERTIFICATION AND C OF C REQUIRED ON ALL LOT RUNS.
- PART TO BE FREE OF BURRS AND SHARP EDGES .010 MAX.
- DRAWING IS FOR INSPECTION PURPOSE ONLY. ALL UNDIMENSIONED FEATURES TO BE HELD  $\pm .010$  WITH RESPECT TO 3D CAD MODEL.
- PART TO BE CLEAN AND FREE FROM ANY SLAG.

**PROPRIETARY AND CONFIDENTIAL**

THE INFORMATION CONTAINED IN THIS DRAWING IS THE SOLE PROPERTY OF LATICRETE INTERNATIONAL INC. ANY REPRODUCTION IN PART OR AS A WHOLE WITHOUT THE WRITTEN PERMISSION OF LATICRETE INTERNATIONAL INC. IS PROHIBITED.

LATICRETE INTERNATIONAL INC.  
91 AMITY ROAD  
BETHANY CT 06524

UNLESS OTHERWISE SPECIFIED:		NAME	DATE
DIMENSIONS ARE IN INCHES		DRAWN	TC
TOLERANCES:		CHECKED	PB
ANGULAR: MACH $\pm 2$ BEND $\pm 5$		ENG APPR.	JC
TWO PLACE DECIMAL $\pm .010$		MFG APPR.	
THREE PLACE DECIMAL $\pm .005$		Q.A.	
INTERPRET GEOMETRIC TOLERANCING PER: ASME Y14.5 - 2009		COMMENTS:	
MATERIAL	SST 304L		
FINISH	SEE TABLE		
DO NOT SCALE DRAWING			

LATICRETE		
TITLE:		
<b>STAMPED METAL BASE PLATE</b>		
SIZE	DWG. NO.	REV
<b>B</b>	9248-0404-002	<b>03</b>
SCALE: 1:1	WEIGHT:	SHEET 1 OF 1