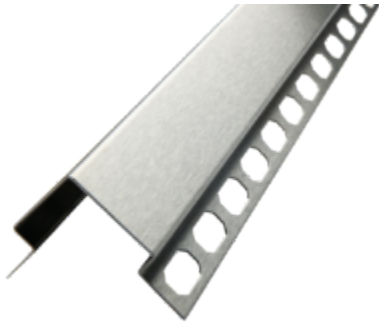




# Corner Protection Profiles - Style 1 (CP1)

DS-65472-0425

**Globally Proven  
Construction Solutions**



## 1. PRODUCT NAME

Corner Protection Profiles - Style 1 (CP1)

## 2. MANUFACTURER

LATICRETE International, Inc.

1 LATICRETE Park North

Bethany, CT 06524-3423 USA

Telephone: +1.203.393.0010, ext. 1235

Toll Free: 1.800.243.4788, ext. 1235

Fax: +1.203.393.1684

Website: [laticrete.com](http://laticrete.com)

## 3. PRODUCT DESCRIPTION

Used to protect outside wall corners, these stainless steel profiles feature dual mounting legs. They provide edge protection against impacts, chipping, and cracking of the unfinished tile edge and an attractive decorative appearance. Available in Stainless Steel, they are suitable for residential and commercial projects and both indoor and outdoor applications.

### Uses

- Corner Protection

### Advantages

- Protect from accidental impacts
- Creates a clean, professional appearance
- Protect the tile from chipping and cracking

### Suitable Substrates

- LATICRETE Profiles & Trims are compatible with LATICRETE Adhesive & Mortar products (Refer to the applicable adhesive and mortar data sheet for complete installation instructions and suitable substrates.)

### Limitations

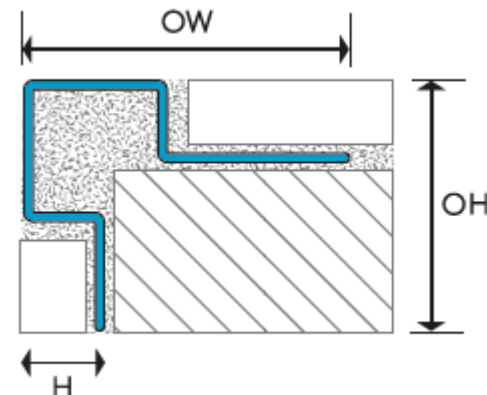
- Areas subject to high chemical exposure such as swimming pools, commercial kitchens, etc. require the use of Stainless Steel 316.
- Normal wear and tear of profiles after installation is expected. As such, scratches, dents, corrosion, and/or discoloration resulting from typical use are not considered product defects.
- Stainless steel profiles are not impervious to all chemicals. Avoid contact with hydrochloric acid and hydrofluoric acid.
- Be careful of cross-contamination when cutting and avoid the use of unalloyed steel tools.

### Cautions

- Follow all tool manufacturer's directions, warning, and safety procedures when cutting and/or trimming profiles
- Cut edges may be sharp. Use caution when handling profiles.

## 4. TECHNICAL DATA

### Physical Properties



Property	Specification
Hardness	250 HB
Melting point (approximate)	2624° F (1440° C)

Height (H)	Overall Height (OH)	Overall Width (OW)
9/32 in (7.0 mm)	2.4 in (62.2 mm)	2.4 in (62.2 mm)
11/32 in (9.0 mm)	2.4 in (62.2 mm)	2.4 in (62.2 mm)
7/16 in (11.0 mm)	2.4 in (62.2 mm)	2.4 in (62.2 mm)

## Working Properties

Specifications subject to change without notification. Results shown are typical but reflect test procedures used. Actual field performance will depend on installation methods and site conditions.

## 5. INSTALLATION

### Selecting the Correct Size Profile

Careful selection of the profile size is critical to ensuring the functionality and appearance of the final installation. Profiles should be selected based on the size of the accompanying tile. Use a profile equal in height or slightly larger than the tile thickness to allow for the profile and tile to sit flush relative to one another when fully installed. Allow for additional space for adhesive when used in combination with large and heavy format tiles.

### Cutting Stainless Steel Profiles

Always refer to the cutting tool manufacturer's instructions, cautions, and requirements prior to cutting profiles. Use appropriate safety equipment and personal protective equipment (PPE) as instructed by the manufacturer of the cutting tool.

Prior to installing the tile, make sure the profiles, corners, and connectors are accurately measured and dry-fitted. Measure and mark the profile to the correct length before cutting. Stainless Steel profiles may be cut with any of the following tools:

- A variable speed angle grinder set to the lowest speed and equipped with a suitable non-ferrous cutting wheel.
- A band saw with a suitable non-ferrous blade.

Once cut, inspect the cut end and use a file to remove any burrs that may have formed during the cutting process. If necessary, the mounting leg may be trimmed using metal or tin snips to avoid interference or overlapping of adjacent profile pieces. Use tools

dedicated to stainless steel cutting and take care to avoid cross-contamination.

### Installing Profiles

Apply tile adhesive with a margin or notched trowel to the area of the wall where the profile will be installed. Firmly press the profile into the adhesive, allowing the adhesive to flow through octagonal cutouts in the mounting leg. Adjust and straighten the profile if necessary.

Using an appropriate notched trowel and adhesive for the tile to be installed, add more adhesive over the mounting leg and surface fully embedding the mounting leg of the profile. Press the tile firmly into the adhesive to achieve full coverage, ensuring the profile and tile are aligned and flush. Leave a 1/16" to 1/8" gap between the profile and tile for grouting. Continue tiling the rest of the area.

Immediately after installing the profiles and tile, clean the surface of the profile to remove any residual adhesive or cement material with clean fresh water and a sponge or microfiber cloth.

## 6. AVAILABILITY AND COST

### Availability

LATICRETE materials are available worldwide.

### For Distributor Information, Call:

Toll Free: 1.800.243.4788

Telephone: +1.203.393.0010

For on-line distributor information, visit LATICRETE at [laticrete.com](http://laticrete.com)

### Cost

Contact a LATICRETE Distributor in your area.

## 7. WARRANTY

See 10. FILING SYSTEM:

- 1 Year Product Warranty (US) (English)

## 8. MAINTENANCE

Stainless Steel profiles require no special maintenance or care but should be periodically cleaned to maintain their appearance. Clean profiles using fresh clean water and a soft sponge or microfiber cloth, a neutral pH cleaner such as STONETECH® Stone & Tile Cleaner may also be used. If cleaning agents are used, they must be free of hydrochloric and/or hydrofluoric acids. Do not use any abrasive cleaning products as they can scratch or mar the decorative surface.

## 9. TECHNICAL SERVICES

### Technical Assistance

Information is available by calling the LATICRETE Technical Service Hotline:

Toll Free: 1.800.243.4788, ext. 1235  
Telephone: +1.203.393.0010, ext. 1235  
Fax: +1.203.393.1948

### Technical and Safety Literature

To acquire technical and safety literature, please visit our website at [laticrete.com](http://laticrete.com).

## 10. FILING SYSTEM

Additional product information is available on our website at [laticrete.com](http://laticrete.com). The following is a list of related documents:

1 Year Product Warranty (US - English)  
5 Year System Warranty (US - English)  
25 Year System Warranty (US - English)  
LATICRETE Lifetime System Warranty (US - English)

---

LATICRETE International, Inc.

One LATICRETE Park North, Bethany, CT 06524-3423 USA • 1.800.243.4788 • +1.203.393.0010 • [www.laticrete.com](http://www.laticrete.com)

© 2025 LATICRETE International, Inc. All trademarks shown are the intellectual properties of their respective owners.