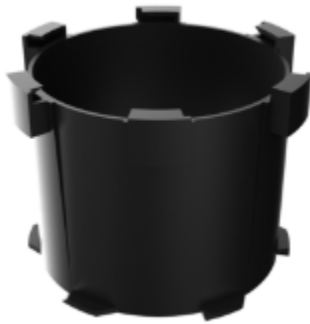




# NXT® Pedestal Extender

DS-65456-0425

**Globally Proven  
Construction Solutions**



## 1. PRODUCT NAME

NXT® Pedestal Extender

## 2. MANUFACTURER

LATICRETE International, Inc.

1 LATICRETE Park North

Bethany, CT 06524-3423 USA

Telephone: +1.203.393.0010, ext. 1235

Toll Free: 1.800.243.4788, ext. 1235

Fax: +1.203.393.1684

Website: [laticrete.com](http://laticrete.com)

## 3. PRODUCT DESCRIPTION

Adds 4 inches (100mm) of height, offering greater flexibility and customization for pedestal configurations. It seamlessly integrates with both Mini and Max units, enhancing their adaptability for a variety of project requirements. Designed to deliver the desired elevation, the Extender ensures the NXT Pedestal system retains its strength and stability throughout.

### Uses

Pedestal paver systems are highly versatile and can be installed over various substrates, provided they are structurally sound and capable of supporting the system's load.

Applications include:

- Paved areas or raised timber
- Pavers (Porcelain, stone, concrete, etc)
- Timber decking

### Advantages

- “Click and connect” – easily combine with Mini and Max to achieve a full range of install elevations
- Superior durability and load rated up to 2,200 psi
- Up to 9 Extenders can be used with a Mini or Max enabling elevations up to 41.5 inches
- Ideal for various materials including concrete, porcelain, natural stone, marble, granite, and decking
- Easily install over existing or new surfaces
- Can be installed over liquid, bituminous, and synthetic membrane systems
- Compatible with our full line of accessories including Rubber Shims, Slope Correctors, Timber Joist Brackets, Wind Uplift Anchors, and Base Protection Pads

### Suitable Substrates

- Concrete and Masonry Surfaces
- Exterior Glue Plywood decks that have been waterproofed with a primary roof waterproofing membrane
- Metal/Steel

### Packaging

24 Pieces per carton

### Approximate Coverage

Coverage will vary based on surface finish type and dimensions.

### Limitations

DO NOT

- Install any NXT Pedestals upside down for any reason.
- Cut the pedestal for any application.
- Use 4” extenders without a pedestal body and base.

## 4. TECHNICAL DATA

### Physical Properties

Test No.	Maximus Force (kN)	Maximus Weight (Kg)
1	20.04	2,043kg
2	21.00	2,141kg

**NATA accredited for compliance with ISO/IEC 17025 by  
ATTAR - Advanced Technology Testing and Research**

### Load Capacity

Test no.1: Load ratings taken at fully extended position  
centrally loaded and force applied

Test no.2: Load ratings taken at fully extended position  
centrally loaded and force applied

Specifications subject to change without notification.  
Results shown are typical but reflect test procedures  
used. Actual field performance will depend on installation  
methods and site conditions.

## 5. INSTALLATION

### Installation Instructions

#### STEP 1:

Ensure the substrate is clean, smooth and free of  
building debris. NXT Pedestals are not suitable for soft  
surfaces ie. grass, loose gravel, crushed rock, etc. If the  
substrate is membraned - we recommend using the NXT  
Pedestal – Base Pad.

#### STEP 2:

Measure the area into equal parts based on tile size.  
Using a chalk line aids in set out and finding the best  
pedestal placement.

\*Note\* The NXT Pedestal system has 5/32”  
spacer joints.

#### STEP 3:

It is recommended to start in the corner and ensure  
the pedestal and tile is place against a solid perimeter.

#### STEP 4:

Lay suitable tiles/pavers/stone on top of the pedestals  
ensuring the material is level.

## 6. AVAILABILITY AND COST

### Availability

LATICRETE materials are available worldwide.

### For Distributor Information, Call:

Toll Free: 1.800.243.4788

Telephone: +1.203.393.0010

For on-line distributor information, visit LATICRETE at  
[laticrete.com](http://laticrete.com)

### Cost

Contact a LATICRETE Distributor in your area.

## 7. WARRANTY

See 10. FILING SYSTEM:

- 5 Year Product Warranty - Pedestals

## 9. TECHNICAL SERVICES

### Technical Assistance

Information is available by calling the LATICRETE  
Technical Service Hotline:

Toll Free: 1.800.243.4788, ext. 1235

Telephone: +1.203.393.0010, ext. 1235

Fax: +1.203.393.1948

### Technical and Safety Literature

To acquire technical and safety literature, please visit our  
website at [laticrete.com](http://laticrete.com).

LATICRETE International, Inc.

One LATICRETE Park North, Bethany, CT 06524-3423 USA • 1.800.243.4788 • +1.203.393.0010 • [www.laticrete.com](http://www.laticrete.com)

© 2025 LATICRETE International, Inc. All trademarks shown are the intellectual properties of their respective owners.