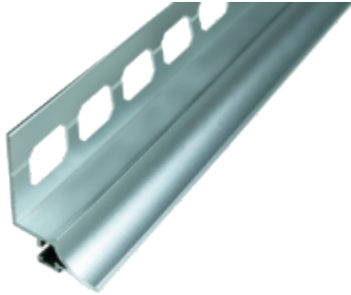




Cove Profiles - Style 1 (CO1)

DS-65403-0724

**Globally Proven
Construction Solutions**



1. PRODUCT NAME

Cove Profiles - Style 1 (CO1)

2. MANUFACTURER

LATICRETE International, Inc.
1 LATICRETE Park North
Bethany, CT 06524-3423 USA

Telephone: +1.203.393.0010, ext. 1235

Toll Free: 1.800.243.4788, ext. 1235

Fax: +1.203.393.1684

Website: laticrete.com

3. PRODUCT DESCRIPTION

Used to create a cove between the tiled wall and already installed flooring. They provide edge protection against chipping and cracking of the unfinished tile edge and a smooth, easy-to-clean transition. The cove profile installs at the time of wall installation and sits on top of the existing flooring. Available in Anodized Aluminum and Texture Coated Aluminum. Suitable for residential and commercial projects.

Uses

- Cove applications

Advantages

- Creates an easy-to-clean joint
- Eliminates the need for caulking
- Creates a clean, professional appearance
- Protect the tile from chipping and cracking

Suitable Substrates

- LATICRETE Profiles & Trims are compatible with LATICRETE Adhesive & Mortar products (Refer to the applicable adhesive and mortar data sheet for complete installation instructions and suitable substrates.)

Limitations

- Areas subject to high chemical exposure such as swimming pools, commercial kitchens, etc. require the use of Stainless Steel 316.
- Normal wear and tear of profiles after installation is expected. As such, scratches, dents, corrosion, and/or discoloration resulting from typical use are not considered product defects.

Cautions

- Follow all tool manufacturer's directions, warning, and safety procedures when cutting and/or trimming profiles
- Cut edges may be sharp. Use caution when handling profiles.

4. TECHNICAL DATA

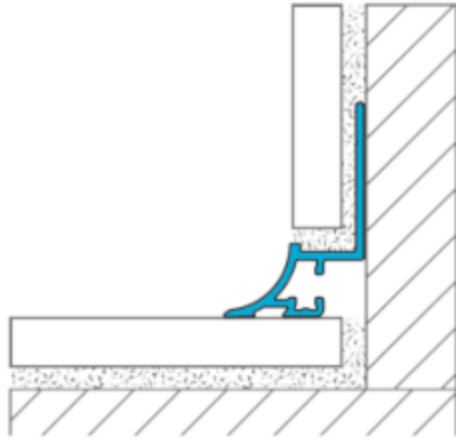
Applicable Standard

Aluminum 6060 in accordance with DIN EN 755-1 (extruded Aluminum)

Surface anodized in accordance with DIN 17611

Physical Properties

Anodized and Texture Coated Aluminum



Property	Specification
Height	3/32" - 1/2" (2.5 mm - 12.5 mm)
Length	8'-2.5" (2.5 m)
Nominal Thickness	1/16" (1.5 mm)
Hardness	70 - 80 HB
Melting point (approximate)	1220° F (660° C)

Available Anodized Aluminum Finishes:

- SAT - Satin
- BCR - Brushed Chrome
- SNI - Satin Nickel
- BNI - Brushed Nickel

Available Texture Coated Aluminum Finishes:

- GRG - Greige
- IVO - Ivory
- LAN - Light Anthracite
- STG - Stone Grey

Available Texture Coated Grout Corresponding Finishes:

- ANW - Antique White
- DKH - Desert Khaki
- CBR - Chestnut Brown
- MOC - Mocha
- DUG - Dusty Grey
- RAV - Raven

Working Properties

Specifications subject to change without notification. Results shown are typical but reflect test procedures used. Actual field performance will depend on installation methods and site conditions.

5. INSTALLATION

Selecting the Correct Size Profile

Careful selection of the profile size is critical to ensuring the functionality and appearance of the final installation. Profiles should be selected based on the size of the accompanying tile. Use a profile equal in height or slightly larger than the tile thickness to allow for the profile and tile to sit flush relative to one another when fully installed. Allow for additional space for adhesive when used in combination with large and heavy format tiles.

Cutting Aluminum Profiles

Always refer to the cutting tool manufacturer's instructions, cautions, and requirements prior to cutting profiles. Use appropriate safety equipment and personal protective equipment (PPE) as instructed by the manufacturer of the cutting tool.

Prior to installing the tile, make sure the profiles, corners, and connectors are accurately measured and dry-fitted. Measure and mark the profile to the correct length before cutting. Aluminum profiles may be cut with any of the following tools:

- A miter box and hacksaw with a bimetal blade and the highest teeth per inch (TPI)
- A variable speed angle grinder set to the lowest speed and equipped with a suitable non-ferrous cutting wheel.
- A chop saw or miter saw with a suitable non-ferrous blade.

Once cut, inspect the cut end and use a file to remove any burrs that may have formed during the cutting process. If necessary, the mounting leg may be trimmed using metal or tin snips to avoid interference or overlapping of adjacent profile pieces.

Installing Profiles

All Cove Profiles - Style 1 have available inside and outside corners in corresponding sizes and finishes. When using corners as part of the installation ensure that they are accounted for when measuring and cutting. To install corners, begin by placing a small amount of tile adhesive into the end of the profile that will be receiving the corner to help hold it in place while positioning. Insert the corner piece into the end of the profile. The corner should push in easily without the need for excessive force.

If anchoring to existing flooring is desired, a bead of LATISIL may be placed on the bottom of the profile that contacts the floor.

Apply tile adhesive with a margin or notched trowel to the area of the wall where the profile will be installed. Firmly press the profile into the adhesive, allowing the adhesive to flow through octagonal cutouts in the mounting leg. Adjust and straighten the profile if necessary.

Using an appropriate notched trowel and adhesive for the tile to be installed, add more adhesive over the mounting leg and surface fully embedding the mounting leg of the profile. Press the tile firmly into the adhesive to achieve full coverage, ensuring the profile and tile are aligned and flush. Leave a 1/16" to 1/8" gap between the profile and tile for grouting. Continue tiling the rest of the area.

Immediately after installing the profiles and tile, clean the surface of the profile to remove any residual adhesive or cement material with clean fresh water and a sponge or microfiber cloth. Aluminum is sensitive to alkaline materials and failure to clean the profile surface can lead to staining or discoloration (oxidation spots) which can be very difficult to remove.

6. AVAILABILITY AND COST

Availability

LATICRETE materials are available worldwide.

For Distributor Information, Call:

Toll Free: 1.800.243.4788

Telephone: +1.203.393.0010

For on-line distributor information, visit LATICRETE at laticrete.com

Cost

Contact a LATICRETE Distributor in your area.

7. WARRANTY

See 10. FILING SYSTEM:

- 1 Year Product Warranty (US) (English)
- 5 Year System Warranty (US) (English)
- 10 Year System Warranty (US) (English)
- 25 Year System Warranty (US) (English)

8. MAINTENANCE

Aluminum profiles require no special maintenance or care but should be periodically cleaned to maintain their appearance. Clean profiles using fresh clean water and a soft sponge or microfiber cloth, a neutral pH cleaner such as STONETECH® Stone & Tile Cleaner may also be used. If cleaning agents are used, they must be free of hydrochloric and/or hydrofluoric acids. Do not use any abrasive cleaning products as they can scratch or mar the decorative surface.

9. TECHNICAL SERVICES

Technical Assistance

Information is available by calling the LATICRETE Technical Service Hotline:

Toll Free: 1.800.243.4788, ext. 1235

Telephone: +1.203.393.0010, ext. 1235

Fax: +1.203.393.1948

Technical and Safety Literature

To acquire technical and safety literature, please visit our website at laticrete.com.

10. FILING SYSTEM

Additional product information is available on our website at laticrete.com. The following is a list of related documents:

DS 6200.1: LATASIL

LATICRETE International, Inc.

One LATICRETE Park North, Bethany, CT 06524-3423 USA • 1.800.243.4788 • +1.203.393.0010 • www.laticrete.com

© 2024 LATICRETE International, Inc. All trademarks shown are the intellectual properties of their respective owners.